

Leandro N. Alem Ave.

13

This avenue which runs parallel to the increasingly distant river leads to the Plaza de Mayo. Its name gives tribute to the founder of one of the two major political parties in the country, the Radical Civic Union. Known in the past as the Paseo de

Julio, it served as a hub for the first skyscrapers of the city. In the 70's, its first blocks showed the concentration of the first skyscrapers in the "curtain-wall" style (Catalinas area). Some of its towers vaguely evoke the Seagram Building by Mies van der Rohe and Philip Johnson in Manhattan.



1 **ENGLISH GEORGIAN STYLE**
English Tower

1916 Ing. Ambrose Poynter (English)

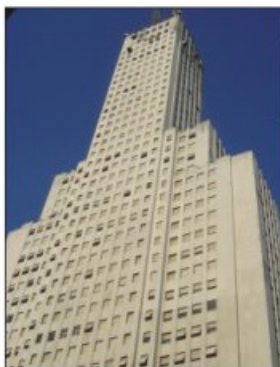
- IMPORTED ENTIRELY FROM ENGLAND
- GIFT OF THE BRITISH EMPIRE FOR THE CENTENNIAL
- SUFFERED MANY NATIONALIST ATTEMPTS
- MUSEUM AND CLOCK OF HIGH PATRIMONIAL VALUE



3 **BRUTALISM**
Sheraton Hotel

1971 Arch. Sánchez Elia, Peralta Ramos

- FIRST HOTEL WITH HIGH TECHNOLOGY
- REVALUED THE ZONE AND STARTED THE NEW TASTE FOR TOWERS
- MOLDED CONCRETE AND GLASS
- TAKEN BY MONTONEROS AS POPULAR HOSPITAL



5 **RATIONALISM**
Alas Building

1951 National Administration

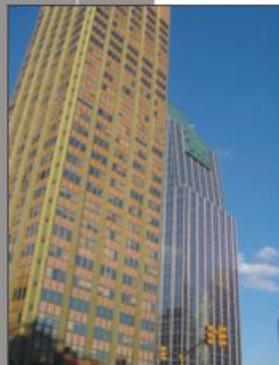
- 42 FLATS AND 132 M. - HIGHEST IN ARGENTINA UNTIL 1996
- HOUSINGS AND OFFICES OF THE ARGENTINE AIR FORCE
- ORTHODOX AND COLD RATIONALISM.



2 **INDUSTRIAL ARCHITECTURE**
Retiro Station (Railroad Mitre)

1915 Arch. Eustace Lauriston (English)

- IMPORTED ENTIRELY FROM ENGLAND FOR THE ENGLISH RAILROAD COMPANY
- IRON AND GLASS (INFLUENCED BY THE FRENCH ING. EIFFEL)
- THREE STATIONS (THE OLDEST THE BEST)



4 **INTERNATIONAL ARCH.**
Catalinas Area

1970 Different Architects

- FIRST TOWERS IN CURTAIN WALL STYLE (MIES VAN DER ROHE)
- STYLE REVALUATED BY CÉSAR PELLÍ IN THE '90



6 **MONUMENTALISM**
Department Of War

1942 Argentine Army Engineers

- PERIOD OF POLITICAL MILITARY PREDOMINANCE
- FRENCH ACADEMICISM IN COLOSSAL SIZE
- MILITARY GENERAL STAFF BUILDING

Other monuments:

- COMEGA BUILDING
- LA NACIÓN BUILDING
- BUENOS AIRES' STOCK EXCHANGE BUILDING
- POST AND MAIL BUILDING