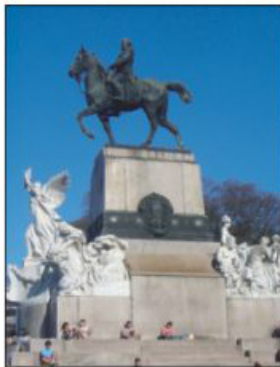


Del Libertador Ave. II

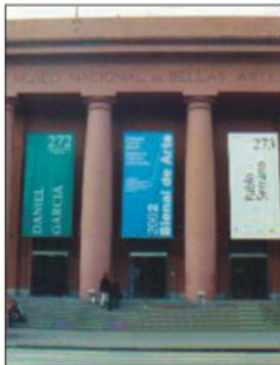
6

Continuing our return journey to the centre along Libertador Avenue, we approach the Recoleta area where we find a fork: to the left it continues toward the financial district area and to the right into the fashionable Alvear Avenue, the

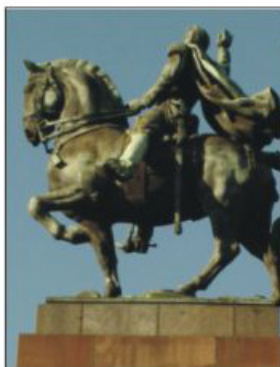
headquarters of most relevant historical palaces and embassies. A small hill where the most elegant houses of the city used to be stands on the right side of this Avenue. Today they have been turned into public squares such as the Mitre Square, the National Library Square, Plaza Francia, and finally Recoleta.



ROMANTICISM	
1	Monument to General Mitre
1923 1927	Sculptors Eduardo Rubino and David Calandra
<ul style="list-style-type: none"> - ORNAMENTS AND ALLEGORIES - MILITARY MAN, PRESIDENT, TRANSLATOR OF THE DIVINE COMEDY - HISTORIAN - ARCHEOLOGIST AND JOURNALIST, FOUNDER OF LA NACIÓN 	



NEOCLASICISM	
3	Ex-Pump House National Art Museum
1931	Arch. Alejandro Bustillo re-adapted it as a museum
<ul style="list-style-type: none"> - 10.000 MASTERPEACES COLLECTION INCLUDES WORKS OF PICASSO, VAN GOGH, RODIN - GREAT ROOM ON ARGENTINEAN ART OPENED IN 1980 ON THE FIRST FLOOR 	



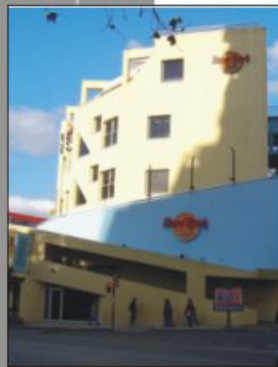
FIGURAL SURVIVALS	
5	Monument to Brig. General Alvear
1926	Esc. Antoine Bourdelle, Plinth by Arch. Alejandro Bustillo
<ul style="list-style-type: none"> - EQUESTRIAN STATUE WITH 4 FULL BRONZE ALLEGORIES, HEROIC ATTITUDE OF VICTORY (ITUZAINGÓ VICTORY) 	

Other monuments:

TORCUATO DE ALVEAR'S COLUMN MONUMENT BY JORISY LAUER, CORONEL RAMÓN FALCÓN'S MONUMENT BY ALBERTO LAGOS , SELFPORTRAIT OF ALBERTO LAGOS - HERACLES ARCHER BY BORUDELLE



ROMANTICISM	
2	French Monument to Argentina
1910	Emile Peynot (French)
<ul style="list-style-type: none"> - GIFT BY THE FRENCH COMMUNITY DURING ARGENTINA'S CENTENNIAL - BASS RELIEF ALLEGORICAL TO FRENCH AND ARGENTINEAN FRIENDSHIP - AT THE TOP, THE ALLEGORY OF THE REPUBLIC OF FRANCE AND ARGENTINA 	



DECONSTRUCTIVE STYLE	
4	Buenos Aires Design
1991 1993	Clorindo Testa (Italo-Argentine)
<ul style="list-style-type: none"> - REFINED DESIGN, ART AND DECORATION TRADE CENTER, THROUGH TERRACES - INTERNAL SPACES BECOME INTEGRATED INTO THE LANDSCAPE - REDESIGN OF THE ANTIQUE ASYLUM FOR THE ELDERLY 	



INDUSTRIAL ARCHITECTURE	
6	Ex-Palais de Glace, National Art Saloon
1931	Arch. Alejandro Bustillo redesigned as museum
<ul style="list-style-type: none"> - EX ICE SKATING HALL - BALL ROOM WHERE FIRST THE ELITE OF BUENOS AIRES DANCED TANGO - CIRCULAR GROUND WITH RADIAL ROOMS 	